

Using the AMD® CATALYST® Control Center

on graphics card

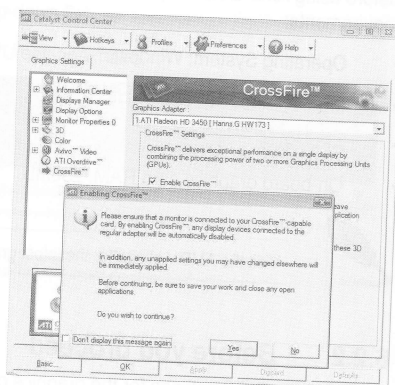
graphics card onto your motherboard. Refer to the User Guide that comes with graphics card for details.

on the Windows® desktop, click **AMD CATALYST(R) Control Center** from the shortcut menu. The AMD CATALYST Control Center screen

Graphics Settings >

Enable CrossFire™ check box. When a confirmation message pops up, click **Yes**. The screen blacks out for about

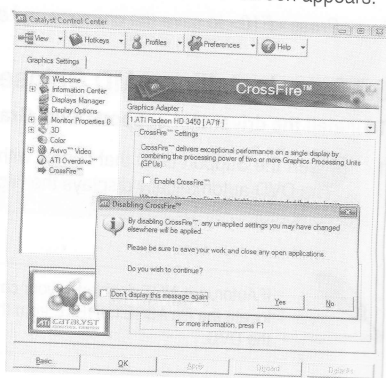
the add-on graphics card is the main monitor.



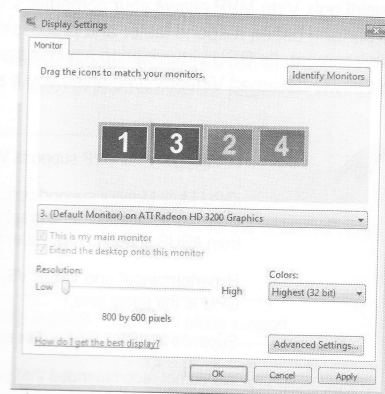
ard graphics card

on the Windows® desktop, and then click **AMD CATALYST(R) Control Center** from the shortcut menu. The AMD CATALYST Control Center screen appears.

Graphics Settings > CrossFire™, then select the **Enable CrossFire™** check box. When a confirmation message pops up, click **Yes**. The screen blacks out for about one minute.



- Right-click on the Windows® desktop, then click **Personalize** from the shortcut menu.
- Click **Display Settings**. Select **[Default Monitor]** on **ATI Radeon HD 4250 Graphics**, then select the check boxes of **This is my main monitor** and **Extend the desktop onto this monitor**. Click **OK**, and then **Yes** from the confirmation window.
- Restart the system. Right-click on the Windows® desktop, then click **AMD CATALYST(R) Control Center** from the shortcut menu. The AMD CATALYST Control Center screen appears.
- Click **Graphics Settings > CrossFire™**, then select the **Enable CrossFire™** check box. When a confirmation pops up, click **Yes**. The screen blacks out for about one minute.
- Click **OK**. The onboard graphics card is set to be the main monitor.



If you are using both an add-on and the onboard graphics cards at same time and want to set the onboard graphics card as your main monitor, follow the instructions below.

- Follow steps 1 to 3 on **Using the onboard graphics card**.
- From the AMD CATALYST(R) Control Center screen, click **Display Manager > Graphics Adapter**. Select **AMD Radeon HD 4250 Graphics [Gabbbs, G HW173]**. Click **OK**, and then **Yes** from the confirmation window.
- Follow steps 6 to step 8 on **Using the onboard graphics card** to complete the process of setting up the onboard graphics card as your main monitor.

